

# NÄTIVE<sup>®</sup> 3D

Lower Pole Volume



Patented by



DECOMED<sup>®</sup>

BIOLOGICAL IDENTITY

# NATIVE<sup>®</sup> 3D NEVER FALLS FLAT



The “already-projected” membrane to complete the submuscular pocket by giving prompt definition to the inframammary fold and immediate natural ptosis.





---

## DECOmed the game changer

---

VOLUMATRIX® is the novelty behind NATIVE®3D. The technological process exploits the elastic/plastic properties of collagen: without reaching breaking point, fibres are subject to specific pressures in intensity and direction and are macroscopically deformed. While the matrix maintains its inner native structure unchanged, its aspect is configured in volumetric forms generated by the rotation of solid figures around an axis.

# COLLAGEN ELEVATED TO FINE ART



Starting from a flat dermal membrane, the new technology bends collagen fibres leading to a new model of ADM with a lens-shaped section.

NATIVE<sup>®</sup>3D is designed to perfectly correspond to the harmonious shape of a natural breast.

# WE DON'T PROMISE THE MOON, JUST THE PERFECT SLICE



NATIVE®3D was designed exclusively for breast surgery. It reduces surgical time in submuscular procedures.

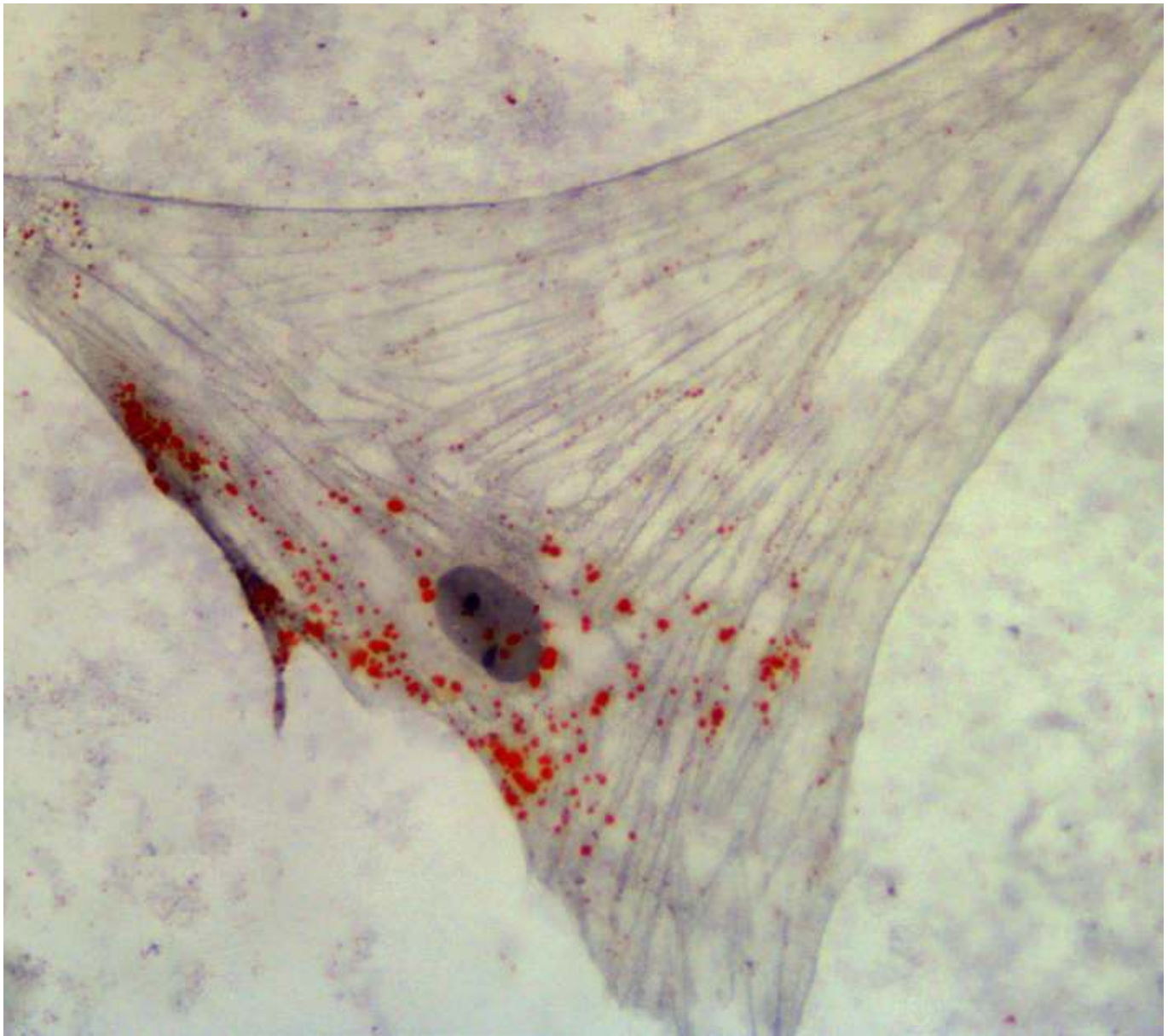
It stands out for its simplicity of application without darts, ribs, or folds.

---

Adipofriendly  
regenerative  
biomaterial

---





Study in partnership with the Department of Neurosciences, Biomedicine and Movement Sciences of the University of Verona (Italy).

In-vitro tests have shown that once they are in contact with NATIVE<sup>®</sup>3D, resident adult stem cells (ASCs) are stimulated to differentiate into adipocytes.<sup>6</sup>



# NATIVE<sup>®</sup> 3D MOVES THE NEEDLE

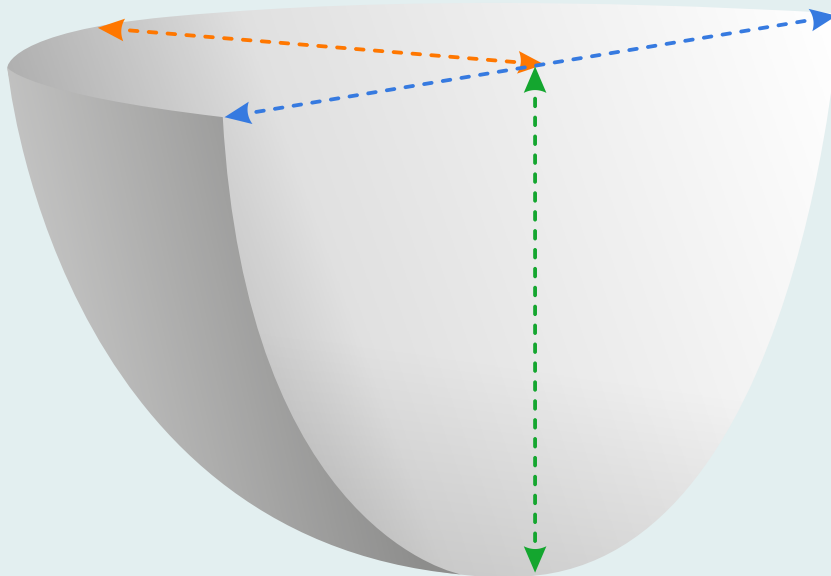


The NATIVE<sup>®</sup> 3D matrix, produced with the new ADIPOMATRIX<sup>®</sup> technology, promotes the differentiation of ASCs into adipocytes. This fosters the regular healing process leading to the formation of a soft, thin, and elastic capsule.

# NÄTIVE<sup>®</sup>3D

Lower Pole Volume

READY TO WEAR



CODE	WIDTH*	HEIGHT*	DEPTH*	THICKNESS
<b>NT714-3D</b>	<b>14 cm</b>	<b>7 cm</b>	<b>7 cm</b>	<b>0,6 mm</b>
<b>NT816-3D</b>	<b>16 cm</b>	<b>8 cm</b>	<b>8 cm</b>	<b>0,6 mm</b>

\*nominal measurements that can be extended by the user as needed

# LITERATURE



1. Caputo GG, et al. Daily Serum Collection after Acellular Dermal Matrix-Assisted Breast Reconstruction. *Archives of Plastic Surgery*. 2015;42(3):321. doi: 10.5999/aps.2015.42.3.321
2. Caputo GG, et al. Skin-Reduction Breast Reconstructions with Prepectoral Implant. *Plastic and Reconstructive Surgery*. 2016 Jun;137(6):1702–5. doi: 10.1097/PRS.0000000000002227
3. Chandarana MN, et al. Acellular dermal matrix in implant-based immediate breast reconstructions: a comparison of prepectoral and subpectoral approach. *Gland Surgery*. 2018 Aug;7(S1):S64–9. doi: 10.21037/gs.2018.03.05
4. Ribeiro L, et al. Impact of Body Mass Index, Age and Tobacco Use on the Outcomes of Immediate Breast Reconstruction with Implants and Acellular Dermal Matrix. *Indian J Plast Surg*. 2021 Sep;54(03):350–7. doi: 10.1055/s-0041-1735422
5. Ribeiro L, Meireles RP, Brito IM, Costa PM, Rebelo MA, Barbosa RF, et al. Comparison of Outcomes in Immediate Implant-Based Breast Reconstruction: Acellular Dermal Matrix versus Inferior Dermal Flap. *Arch Plast Surg*. 2022 Mar;49(02):158–65. doi: 10.1055/s-0042-1744404
6. Quintero Sierra LA, et al. Tissue-Material Integration and Biostimulation Study of Collagen Acellular Matrices. *Tissue Eng Regen Med*. 2022 Mar 4 doi: 10.1007/s13770-021-00420-6
7. Lanzaro Martins L, et al. A Two-Year Retrospective Analysis of the Clinical Outcomes of Immediate Submuscular Breast Reconstructions With Native<sup>®</sup> Acellular Dermal Matrix. 2023; doi: 10.7759/cureus.41343
8. Berna G, et al. The Use of a Three-Dimensional Matrix in Subpectoral Breast Reconstruction. First experience with NATIVE<sup>®</sup>3D. (Under revision)

Patented by



info@decomed.it

www.decomed.it

Tel +39 041 50 20 370

Fax +39 041 50 20 366

